

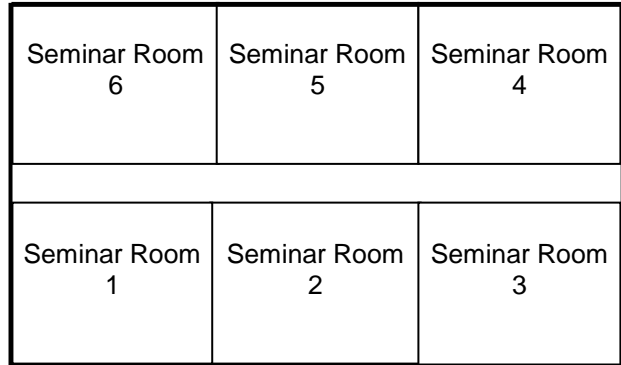
# SLOANE ROBINSON BUILDING

Newman Quad - Keble College



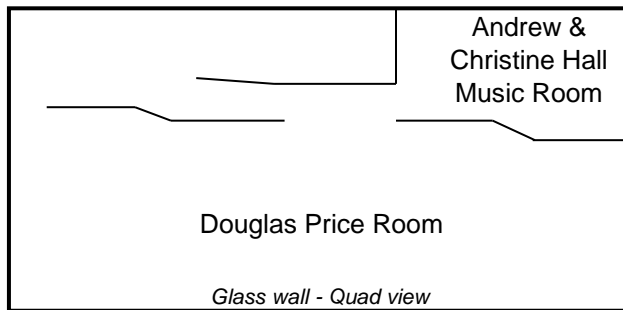
## Suite of six seminar rooms

Each seats up to 40 delegates theatre style.



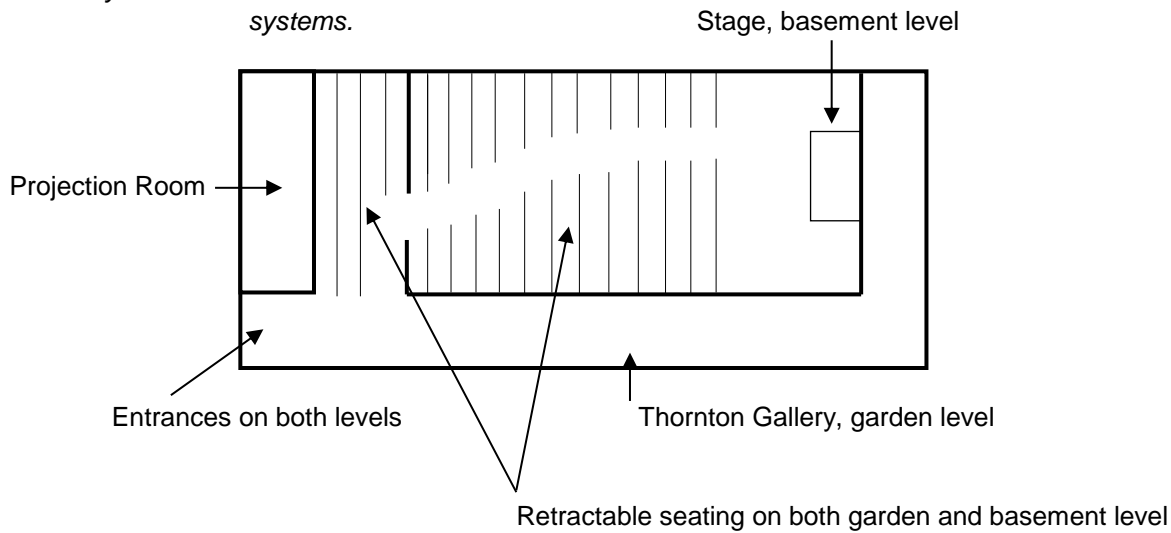
## Douglas Price Room

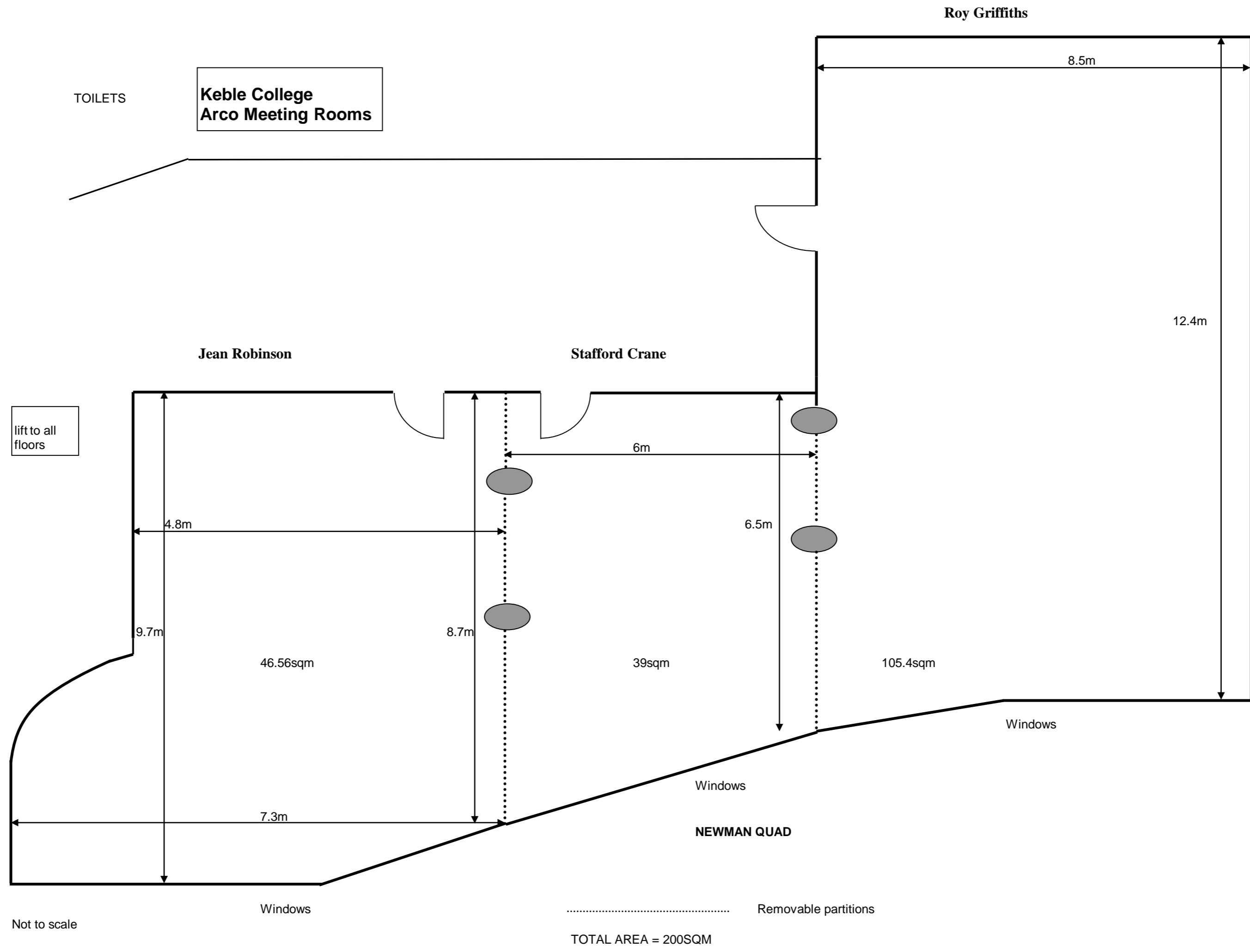
A large multi purpose room.



## The O'Reilly Theatre

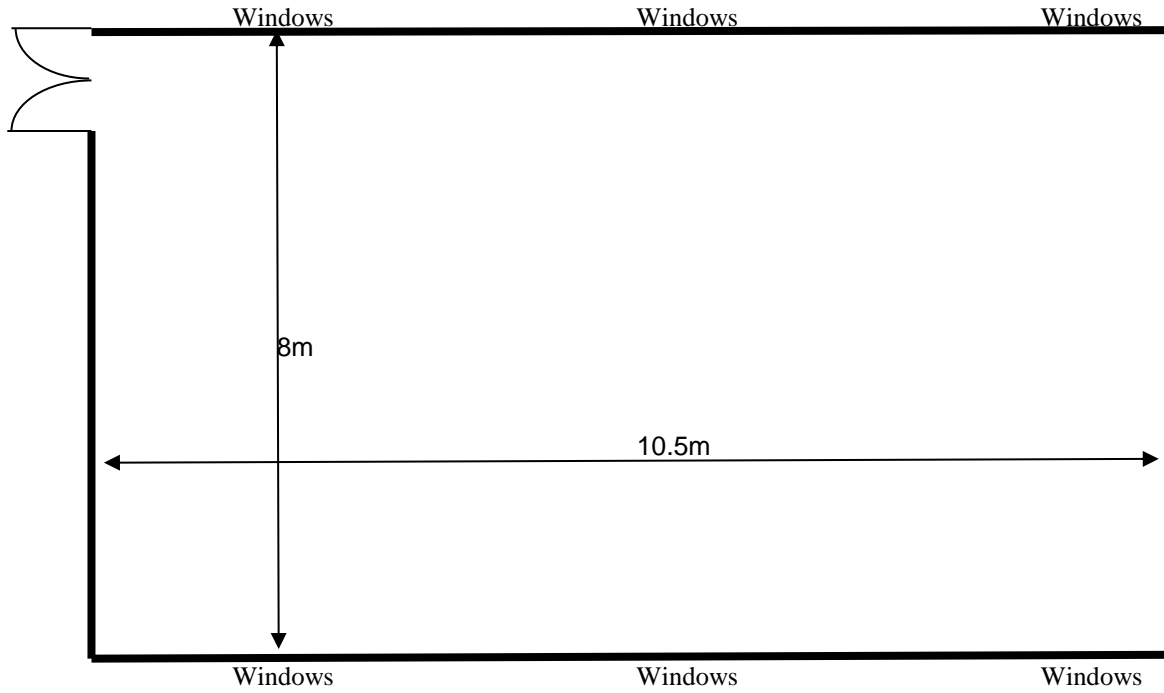
Seats 250. Theatre built on two levels, using retractable seating and moveable staging for maximum flexibility. State-of-the-art audio visual and sound systems.





**Keble College**

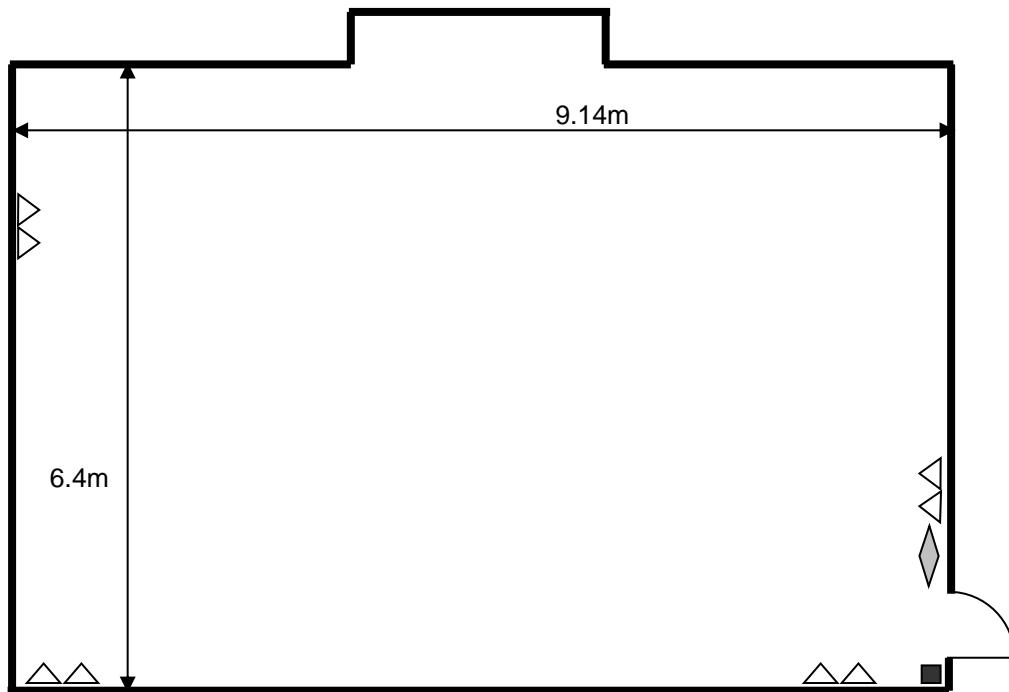
**Pusey Room  
Floor Plan**



The Pusey room is 4m high at its lowest point

Not to scale

**Keble College Gibbs room  
Floor Plan**



- △ Power points
- Telephone point ~ Telephone number 272793
- ◇ Light switch

The Gibbs room is 2.72m high at its lowest point

Not to scale