



**KEBLE COLLEGE  
CHAPLAINCY  
2025**

**HILARY TERM**

All are welcome to attend our services, whatever you do or don't believe.

They are a great opportunity to hear our wonderful choir, to take time out of a busy day, or to explore some of life's big questions.

# Services

## Services with Keble Choir

### Sundays 5.30pm College Eucharist

Our main service of the week with the Choir and a thought-provoking talk.  
Followed by pre-dinner drinks.

### Tuesdays 6.00pm Choral Evensong

A 40 minute service of music and readings. A weekly musical highlight.

### Thursdays 9.00pm Compline by Candlelight

Sacred music, stillness, and meditation.  
30 minutes of calm at the heart of the week.  
Followed by port and hot chocolate.

## Special Services

Sun 19 Jan 5.30pm	<b>Epiphany Carol Service by Candlelight</b> Carols and Readings celebrating the visit of the wise men
Sun 26 Jan 5.30pm	<b>Holocaust Memorial Day Commemoration</b> with the Council for Christians & Jews and local Jewish Choir <i>OxfordShir</i>
Sat 8 Feb 5.30pm	<b>Mitre Club Evensong</b> Followed by Mitre Club Dinner and Hat Competition
Fri 14 Feb 6.00pm	<b>Words &amp; Music for Valentine's Day</b> Song, Poetry & Reflections on Love
Wed 5 Mar 6.00pm	<b>Ash Wednesday Eucharist</b> with Imposition of Ashes, marking the start of Lent
Sun 9 Mar 5.30pm	<b>Lent Sequence</b> Music, Poetry & Bible Readings for Lent and Passiontide
Tues 11 Mar 6.00pm	<b>International Womens' Day Evensong</b> with special music, readings, and prayers

## Sunday Preachers

19 Jan	Fr Max Kramer, Chaplain - <i>Epiphany Carol Service</i>
26 Jan	Dr Edward Kessler MBE - <i>HMD Commemoration</i> Academic, Inter-faith Leader, Policy Advisor
2 Feb	Professor Irene Tracey - <i>Candlemas</i> Vice-Chancellor of the University of Oxford
9 Feb	Fr Andrew Davison Regius Professor of Divinity, University of Oxford
16 Feb	Fr Fergus Butler Gallie - Assistant Chaplain
23 Feb	Hollie Goodwin - Chapel Intern
2 Mar	Mtr Esther Lay - Priest, Poet, Soprano
9 Mar	Fr Max Kramer, Chaplain - <i>Lent Sequence</i>

## Daily Prayers (Mon-Fri)

8.15am	Morning Prayer/Mass on Weds ( <i>followed by breakfast</i> )
6.00pm	Mon: Plainsong Mass; Tu: Evensong; Wed: Evening Prayer
Thu 6.30pm	Said Mass
	Fri 6.30pm Chapel Tour

## Lectio Divina (Weds 5.15-6.00pm)

A prayerful way of digesting the text of the Bible, the ancient practice of Lectio Divina involves reading, meditating, and shared reflections.



# Weekly Events

## **Mondays 1.00-1.50pm**

*Max's Lunch*

*Informal Talk & Discussion*

*Sandwich Lunch Provided*

## **Doughnut Tuesdays 3.45-4.15pm**

*Doughnuts & Coffee*

*Drop in for a break*

## **Wednesdays 5.15-6.00pm**

*Lectio Divina*

*Light of the World Side Chapel*

## **Craft Wednesdays 7.00-8.00pm**

*Crafts & Cake for grad students*

*HBAC MCR*

## **Thursdays 7.15-8.15pm**

*Pizza & Ponder*

*Free pizza and discussions about life and faith questions.*

## **Fridays 6.30-6.50pm**

*Chapel Tour (20 mins)*

*An informal guided tour of Chapel ending at the Light of the World*

## **Max's Lunch (Mondays 1.00pm)**

*Max's Lunch is an informal opportunity to hear interesting people talking about interesting things and for discussion over a sandwich lunch provided by Fr Max. The talks are all accessible to people in any subject, they are an ideal opportunity to listen to ideas beyond our own disciplines. Finishes 1.50pm, it's ok to come late or leave early!*

20 Jan **The Light of the World on Tour** (Ian Archer, History)

27 Jan **Sharia and Other Rules to Live By**  
(Morgan Clarke, Anthropology)

3 Feb **Quantum Philosophy: What does it mean to live in a Quantum world?** (George Webster, Philosophy)

10 Feb **The Banality of Colonial Violence in Africa**  
(Heike Schmidt, History)

17 Feb **Control Freaks: How Feedback Shapes our World**  
(Idris Kempf, Engineering)

24 Feb **Household Medicine in Seventeenth-Century England: Reading and Remedies** (Sophie Aldred, Theology)

3 Mar **The Lost World of the Forgotten Composers: Music and the Politics of Culture** (Emilie Capulet, Music)

## **Craft Wednesday (Wednesday 7-8pm)**

*A weekly craft drop-in for grad students in the HBAC MCR. Drop in to express your creativity and find calm through crafts and friendly chat, as well as making fab ornaments for your room. Craft stuff & cake provided!*

## **Pizza & Ponder (Thursdays 7.15pm)**

*This term we explore Seven Ideas that Changed the World, from Athenian Democracy to Communism, from Christianity to Human Rights, and much more. We'll be thinking about the history of these world-changing ideas and discussing what they mean for life today. Lasts 1 hour. Free pizza!*

## **Chapel Tours (Fridays 6.30pm)**

*A 20-minute guided tour of the Chapel exploring its history, architecture, and art. The tour ends with an optional five-minute meditation on Keble's greatest treasure: The Light of the World. An ideal opportunity to show off the Chapel to your guests before Formal Hall.*

## **Keble Early Music Festival (25 Feb-1 Mar)**

*A feast of concerts, recitals, and events with leading musicians.*

Full programme: [www.keble.ox.ac.uk/events/kemf-2025/](http://www.keble.ox.ac.uk/events/kemf-2025/)

*Social and discussion-based events for all members of the College community.*

*These events are held in the Chaplain's Office (Keble L10 2901, above the Porters' Lodge) unless indicated otherwise.*

Events

# Key Contacts



## **Chaplain: Fr Max Kramer**

Fr Max offers pastoral support to members of the College of all beliefs and backgrounds. His office is 2901 just above the Porters' Lodge and he is always happy for people to drop by for a chat, or to arrange a meeting email [max.kramer@keble.ox.ac.uk](mailto:max.kramer@keble.ox.ac.uk)



## **Chapel Intern: Hollie Goodwin**

Hollie assists with all aspects of Chapel life, she is based at Keble and St Andrew's Headington for a year as she discerns a call to priestly ministry.

[hollie.goodwin@keble.ox.ac.uk](mailto:hollie.goodwin@keble.ox.ac.uk)

**Chapel & Events Clerks** help Fr Max organise services and events:



**Becky**



**Talav**



**Max**



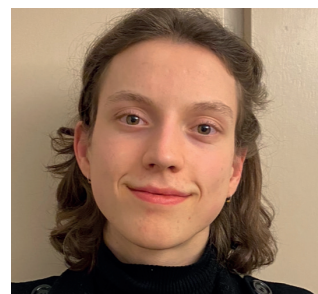
**Cecilia (Robes)**



**Jamie**



**Jonathan (Tech)**



**Raya (Events Clerk)**



## **Director of Music: Christian Wilson**

Christian directs the Chapel choir and the annual Keble Early Music Festival. He also supports other musical activities in College. If you would like to audition for the Choir or be involved in music in any other way contact [christian.wilson@keble.ox.ac.uk](mailto:christian.wilson@keble.ox.ac.uk)



## **Music Administrator: Pippa Thynne**

Pippa provides administrative support for the Choir and College's musical life. This includes supporting concerts, recordings, tours, and services, the annual Keble Early Music Festival, and the Keble College Music Society. [pippa.thynne@keble.ox.ac.uk](mailto:pippa.thynne@keble.ox.ac.uk)

**Organ Scholars: Edward Gaut & Frederick Frostwick**

**Ordinand on Placement: Ben Almond**

**[www.keble.ox.ac.uk/about/chapel](http://www.keble.ox.ac.uk/about/chapel)**